



AUCTION

LEADING THE INDUSTRY SINCE 1945

SATURDAY – FEBRUARY 16, 2019 – 11:00 AM

20-Acre Estate

2-STORY HOME – BARN – APARTMENT – POND – BLACKTOP DRIVE

New Waterford – Crestview Schools – Columbiana County

Also Selling: John Deere 5300 Tractor – 6' Rotary Mower – Zero-Turn Mower

Sells to settle the estate on location:

46518 TAYLOR AVE., NEW WATERFORD, OH 44445

Directions: From the SR 7 & SR 14 intersection in Columbiana, take SR 7 south 3 miles to Crestview then east 1.4 miles to Taylor and left to auction. Watch for KIKO signs.



Information is believed to be accurate but not guaranteed.



330.455.9357 • kikoauctions.com



Estate consists of a good 2-story home having applianced kitchen, tile flooring, and center bar with doors leading out to deck. Living room/dining room combination with stone fireplace and foyer entrance. 4 bedrooms up, 3 full baths. Divided basement, breaker electric, and gas furnace. 2-car attached garage with enclosed breezeway with heat. Nice apartment or in-law suite with applianced kitchen, living room/dining room combination, 1 bedroom, and bath. Nice barn with floored upper level was used by owner for private parties. Lower level finished w/ office area divided into rooms. Asphalt drive to all buildings. Nice machinery or shop building having overhead door, concrete floors, and breaker electric. Small utility building. A dandy approx. 55'x62' pole-type barn with stalls, concrete floor, grain bin, cattle runs, and overhead door. A dandy show barn. Loads of vinyl fencing.

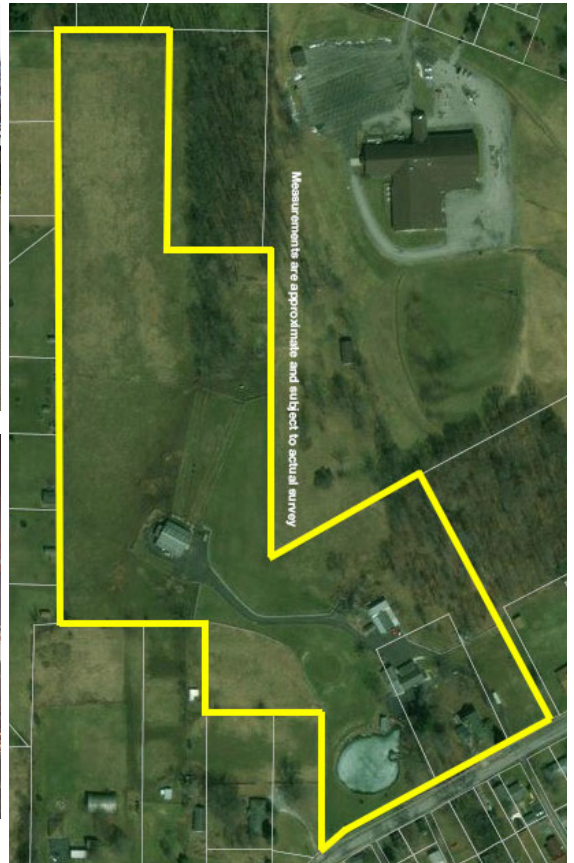
NOTE: What a property this is! Loads of possibilities on 20 acres of land. Suspended gazebo over pond. Convenient location to State Routes and schools. Sells to settle the estate, subject to court approval with no reserve. Opportunity knocking. Shown by appointment. Contact auctioneers or open auction morning at 9:00 AM.

TERMS ON REAL ESTATE: 10% down auction day, balance due at closing. A 10% buyer's premium will be added to the highest bid to establish the purchase price, which goes to the seller. Any desired inspections must be made prior to bidding. All information contained herein was derived from sources believed to be correct. Information is believed to be accurate but not guaranteed.

ALSO SELLING IMMEDIATELY AFTER REAL ESTATE: John Deere 5300 Diesel Tractor W/F with John Deere 520 loader, rear remotes, shows 1,024 hours – 6' 3pt brush mower – Xmark Lazer Z HP diesel zero-turn mower 60" deck.

TERMS ON CHATTELS: Driver's license or State ID required to register for bidder number. Cash, Check, Debit Card, Visa, or Master Card accepted. 4% buyer's premium on all sales; 4% waived for cash or check. Information is believed to be accurate but not guaranteed.

AUCTION BY ORDER OF: Joseph Belichick, Administrator of the Joseph S. Belichick Estate, Columbiana County Probate Court Case #2016-ES-00128



Auctioneer/Realtor®
LENNIE E. MILANO
330-495-3900
lenniemilano@kikocompany.com



Auctioneer/Realtor®
DOUG L. MILANO
330-205-2196
dmilano@kikocompany.com



330.455.9357 • kikoauctions.com

